

## GRB-600 Rotating Cabinet System



Cabinet Width	Max. 680 mm
Cabinet Height	Max. 1925 mm
Overall Height	GRB-600-NC... Cabinet Height+230 mm GRB-600-ST... Cabinet Height+435 mm GRB-600-CH... Cabinet Height+660 mm
Cabinet Depth	300 mm
Load Capacity	740 N (75.5 kgf) (Including Cabinet Weight)

### Features

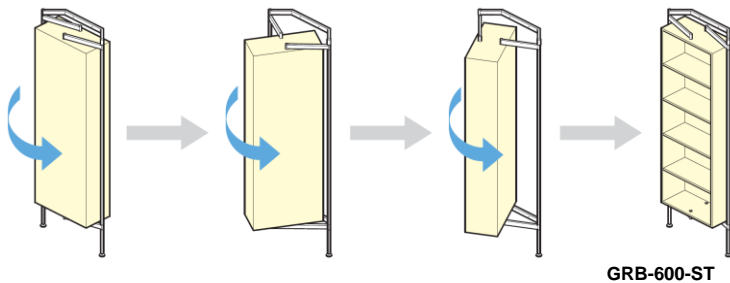
- Innovative "reversible" cabinet system rotates 180° for easy access to both sides
- 3 model types available: *Inset Wall Type (NC)*, *Floor Type (ST)*, and *Floor-to-Ceiling Type (CH)*
- Stainless steel frame can be cut in height to accommodate cabinets of various heights
- Useful for a variety of storage and display installations in residential and retail settings

### Application Example

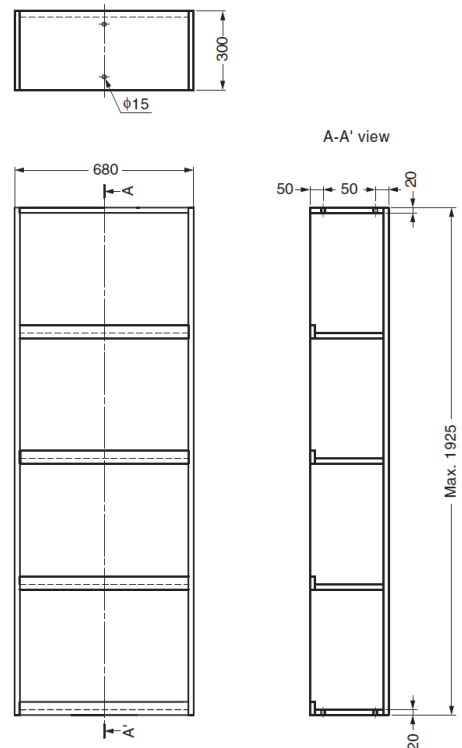
- Bathroom cabinet, living room, kitchen, dressing room, store etc.

### Notes

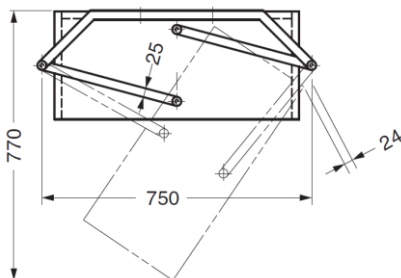
- Please use special tool **GZ059** (sold separately for proper installation)



### Cabinet Dimensions



### Rotating Dimensions (Cabinet Width 680 mm)



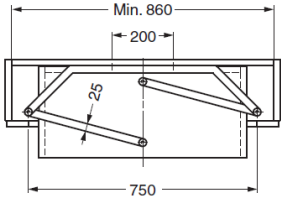
### Body

Part No.	Type	Material	Finish
GRB-600-NC	Inset Wall / Cabinet Type	Stainless Steel 304	Satin
GRB-600-ST	Floor Type		
GRB-600-CH	Floor-to-Ceiling Type		

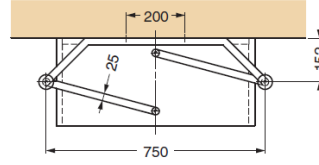
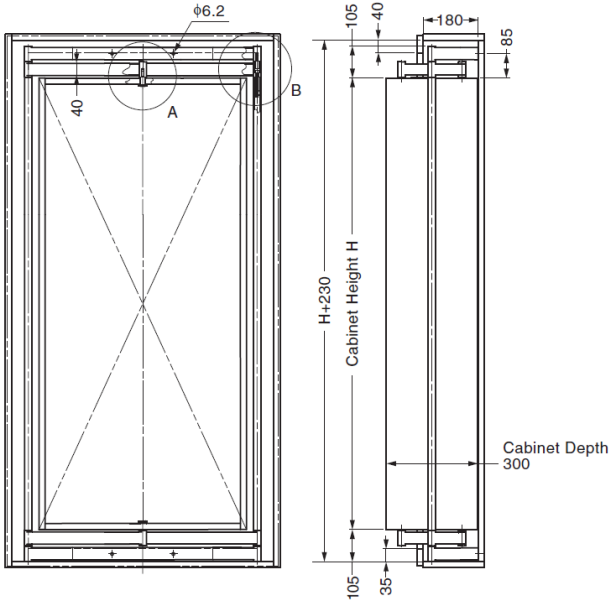
### Optional Tool (Sold Separately)

Part No.
<b>GZ059</b>

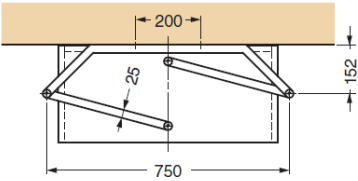
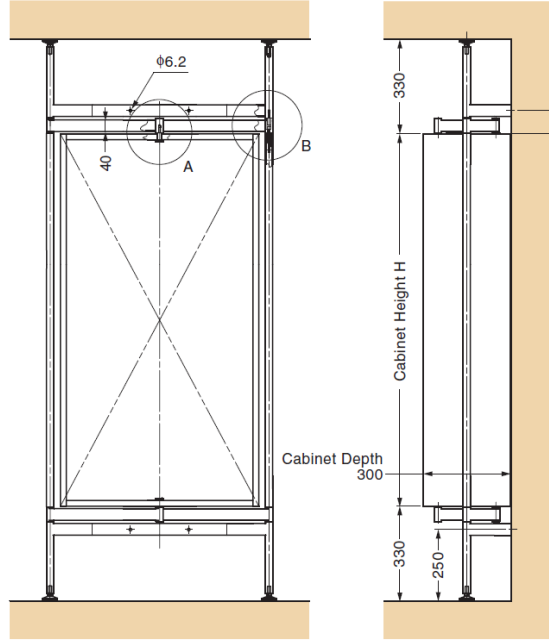
## Installation Example



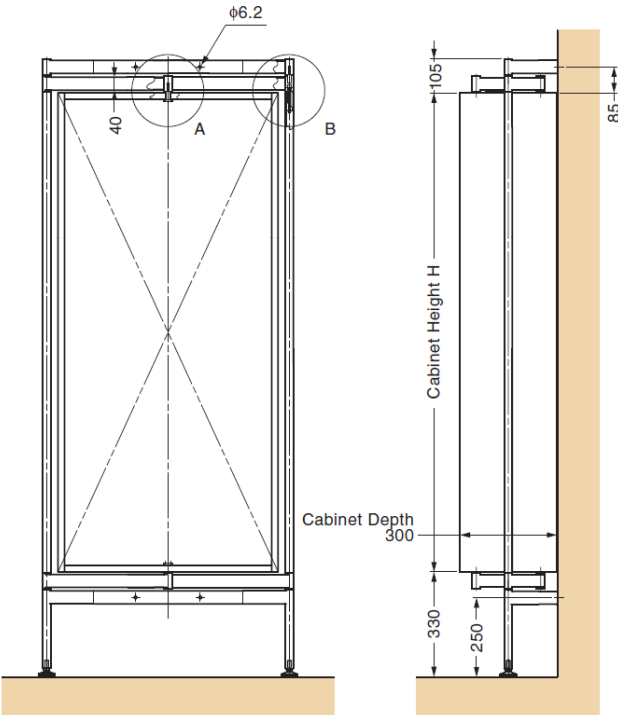
**GRB-600-NC**  
Inset Wall / Cabinet Type



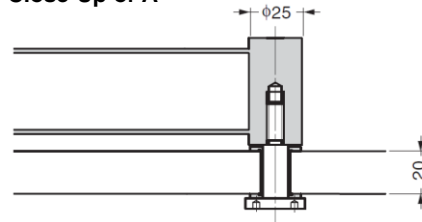
**GRB-600-ST**  
Floor Type



**GRB-600-CH**  
Floor-to-Ceiling Type



## Close-Up of A



## Close-Up of B

